

# KAYNAK BOYUNLU FLANŞ PN 16



TS EN 1092 - 1 + A1 TİP 11  
DIN 2633

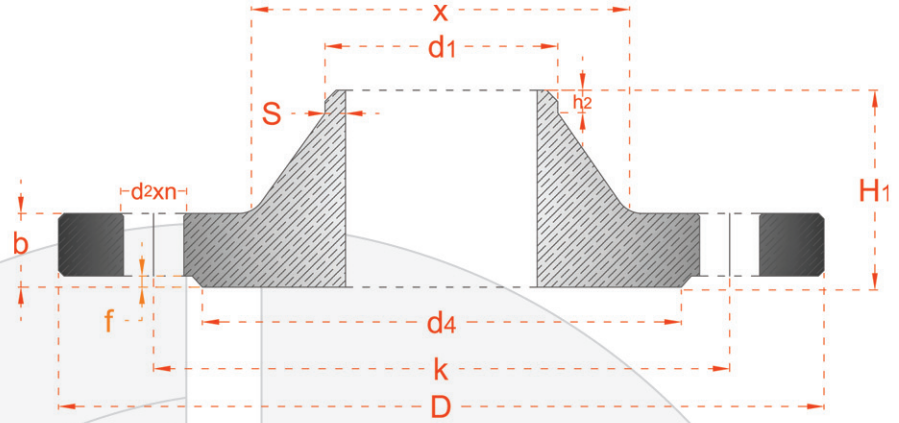


**E.M.P.**  
www.emp.com.tr  
www.empflans.com

# WELDING NECK FLANGE PN 16



EN 1092 - 1 + A1 TYPE 11  
DIN 2633



BORU/PIPE	FLANŞ /FLANGE						BOYUN/ NECK			RAISED FACE		DELİKLER/DRILLINGS			AĞIRLIK WEIGHT	
	DN	d1	D	b		H <sub>1</sub>		x	s	h2	d <sub>s</sub>	f	k	n		vida /screw
EN 1092-1				DIN	EN 1092-1	DIN										
10	17.2	90	16	14	35	35	28	1.8	6	40	2	60	4	M12	14	0.58
15	21.3	95	16	14	38	35	32	2.0	6	45	2	65	4	M12	14	0.64
20	26.9	105	18	16	40	38	40	2.3	6	58	2	75	4	M12	14	0.95
25	33.7	115	18	16	40	38	45	2.6	6	68	2	85	4	M12	14	1.14
32	42.4	140	18	16	42	40	56	2.6	6	78	2	100	4	M16	18	1.69
40	48.3	150	18	16	45	42	64	2.6	7	88	3	110	4	M16	18	1.86
50	60.3	165	18	18	45	45	75	2.9	8	102	3	125	4	M16	18	2.53
65	76.1	185	18	18	45	45	90	2.9	10	122	3	145	4	M16	18	3.06
80	88.9	200	20	20	50	50	105	3.2	10	138	3	160	8	M16	18	3.70
100	114.3	220	20	20	52	52	131	3.6	12	158	3	180	8	M16	18	4.62
125	139.7	250	22	22	55	55	156	4.0	12	188	3	210	8	M16	18	6.30
150	168.3	285	22	22	55	55	184	4.5	12	212	3	240	8	M20	22	7.75
200	219.1	340	24	24	62	62	235	5.9	16	268	3	295	12	M20	22	11.0
250	273.0	405	26	26	70	70	292	6.3	16	320	3	355	12	M24	26	15.6
300	323.9	460	28	28	78	78	344	7.1	16	378	4	410	12	M24	26	22.0
350	355.6	520	30	30	82	82	390	8.0	16	438	4	470	16	M24	26	28.8
400	406.4	580	32	32	85	85	445	8.0	16	490	4	525	16	M27	30	36.3
450	457	640	34	34	87	85	490	8.0	16	550	4	585	20	M27	30	44.3
500	508	715	36	34	90	90	548	8.0	16	610	4	650	20	M30	33	61.0
600	610	840	40	36	95	95	652	8.8	18	725	5	770	20	M33	36	75.4
700	711	910	40	36	104	100	755	8.8	18	795	5	840	24	M33	36	77.0
800	813	1025	41	38	108	105	855	10	20	900	5	950	24	M36	39	101.0
900	914	1125	48	40	118	110	955	10	20	1000	5	1050	28	M36	39	122.0
1000	1016	1255	59	42	137	120	1058	10	22	1115	5	1170	28	M39	42	162.0
1200	1219	1485	78	48	160	130	1262	13	30	1330	5	1390	32	M45	48	243.0
1400	1422	1685	84	52	177	145	1465	14	30	1530	5	1590	36	M45	48	323.0
1600	1626	1930	102	58	204	160	1668	16	35	1750	5	1820	40	M52	56	479.0
1800	1829	2130	110	62	218	170	1870	18	35	1950	5	2020	44	M52	56	599.0
2000	2032	2345	124	66	238	180	2072	20	40	2150	5	2230	48	M56	62	719.0

Ölçüler mm olarak verilmiştir.  
Çelik ve paslanmaz üretilebilir.

Dimensions are in mm.  
Steel and stainless steel can be produce.